

## **Willis Point Rd between Wallace Dr and Municipal Boundary**

**March 31, 2019 To April 05, 2019**



The data presented here is for information purposes only and should not be considered authoritative for construction, geotechnical, engineering, navigational, legal, or other site-specific uses. The information shared is owned by the Transportation Division of the Engineering Department at the District of Saanich. Accuracy is not guaranteed.

Start Date: 1-Apr-19  
 Start Time: 0:22  
 Station ID: M0042-01

**Location 1: Willis Point Rd between Wallace Dr and Municipal Boundary**

Note: Wallace Dr and Municipal Boundary

DATE:	April 1, 2019		April 2, 2019		April 3, 2019		April 4, 2019		April 5, 2019		WK AVG		WK AVG	HOURLY
	MON		TUE		WED		THURS		FRI		EB	WB	CH 1+2	%
Time:	EB	WB	EB	WB	EB	WB	EB	WB	EB	WB	EB	WB		
12-1 AM					0	2	2	2	2	5	1	3	4	0.2%
1-2 AM					1	2	2	4	2	0	2	2	4	0.2%
2-3 AM					4	1	2	2	1	1	2	1	4	0.2%
3-4 AM					4	2	3	0	3	1	3	1	4	0.2%
4-5 AM					3	2	5	2	4	1	4	2	6	0.3%
5-6 AM					7	3	8	3	9	6	8	4	12	0.6%
6-7 AM					41	29	48	27	47	31	45	29	74	3.8%
7-8 AM					216	26	211	23	223	26	217	25	242	12.2%
8-9 AM					154	25	164	32	163	35	160	31	191	9.7%
9-10 AM					58	45	53	38	69	35	60	39	99	5.0%
10-11 AM					56	38	42	29	49	49	49	39	88	4.4%
11-12 PM					52	59	50	44	54	38	52	47	99	5.0%
12-1 PM					53	50	44	41	53	66	50	52	102	5.2%
1-2 PM					55	45	59	60	57	50	57	52	109	5.5%
2-3 PM					55	68	41	39	51	66	49	58	107	5.4%
3-4 PM					65	80	50	115	53	129	56	108	164	8.3%
4-5 PM					65	183	33	172	68	171	55	175	231	11.7%
5-6 PM					36	127	51	121	58	145	48	131	179	9.1%
6-7 PM					38	64	32	57	51	69	40	63	104	5.2%
7-8 PM					26	34	26	28	48	40	33	34	67	3.4%
8-9 PM					12	23	11	17	17	27	13	22	36	1.8%
9-10 PM					7	15	21	17	11	15	13	16	29	1.4%
10-11 PM					4	12	5	11	3	15	4	13	17	0.8%
11-12 AM					1	4	4	7	1	4	2	5	7	0.4%
<b>LANES</b>					<b>1013</b>	<b>939</b>	<b>967</b>	<b>891</b>	<b>1097</b>	<b>1025</b>	<b>1026</b>	<b>952</b>	<b>1977</b>	<b>100.0%</b>
<b>TOTAL</b>					<b>1952</b>		<b>1858</b>		<b>2122</b>		<b>1980</b>			
	MON		TUE		WED		THURS		FRI		WK AVG			

PEAK HOUR					TOTAL VEHICALS-PEAK PERIODS		2 HOUR PEAK INTERVALS				
MAX. 7 - 9 am PEAK HOUR	242	⇒	12.2%	between 7-8 AM	1044	⇒	6 HR TOTAL	<b>2 HR AM (7 - 9 AM)</b>			
MAX. 7 - 11 am PEAK HOUR	242	⇒	12.2%	between 7-8 AM	843	⇒	4 HR TOTAL	VEH / HR	VEH / 2HR	2 HR %	
MAX. 11 am - 1 pm PEAK HOUR	102	⇒	5.2%	between 12-1 PM				7-8 AM	242	433	21.9%
MAX. 11 am - 3 pm PEAK HOUR	109	⇒	5.5%	between 1-2 PM				8-9 AM	191		
MAX. 4 - 6 pm PEAK HOUR	231	⇒	11.7%	between 4-5 PM			<b>24 HOUR FACTORS</b>	<b>2 HR NOON (11 - 1 PM)</b>			
MAX. 3 - 6 pm PEAK HOUR	231	⇒	11.7%	between 4-5 PM	1.89	⇒	6-24 HR FACT.	VEH / HR	VEH / 2HR	2 HR %	
					2.35	⇒	4-24 HR FACT.	11-12 PM	99	201	10.2%
								12-1 PM	102		
								<b>2 HR PM (4 - 6 PM)</b>			
								VEH / HR	VEH / 2HR	2 HR %	
								4-5 PM	231	410	20.7%
								5-6 PM	179		

# Willis Point Rd between Wallace Dr and Municipal Boundary

Westbound

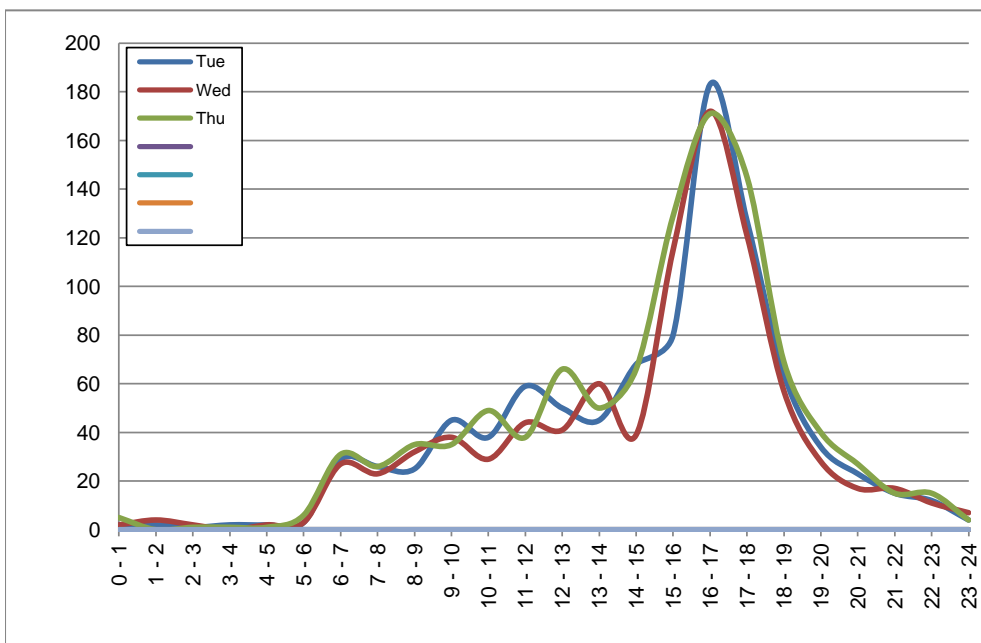
April 2, 2019 to April 4, 2019

## Hourly Volumes

Time Period	Tue	Wed	Thu			
	Apr 2	Apr 3	Apr 4			
0 - 1	2	2	5			
1 - 2	2	4	0			
2 - 3	1	2	1			
3 - 4	2	0	1			
4 - 5	2	2	1			
5 - 6	3	3	6			
6 - 7	29	27	31			
7 - 8	26	23	26			
8 - 9	25	32	35			
9 - 10	45	38	35			
10 - 11	38	29	49			
11 - 12	59	44	38			
12 - 13	50	41	66			
13 - 14	45	60	50			
14 - 15	68	39	66			
15 - 16	80	115	129			
16 - 17	183	172	171			
17 - 18	127	121	145			
18 - 19	64	57	69			
19 - 20	34	28	40			
20 - 21	23	17	27			
21 - 22	15	17	15			
22 - 23	12	11	15			
23 - 24	4	7	4			
<b>Day Total</b>	<b>939</b>	<b>891</b>	<b>1025</b>			

## 15-Minute Volumes

Time Start	Tue	Wed	Thu				Time Start	Tue	Wed	Thu			
	Apr 2	Apr 3	Apr 4					Apr 2	Apr 3	Apr 4			
0:00	0	0	0				12:00	16	10	16			
0:15	1	1	3				12:15	13	13	15			
0:30	1	0	2				12:30	10	8	24			
0:45	0	1	0				12:45	11	10	11			
1:00	1	3	0				13:00	0	19	14			
1:15	0	0	0				13:15	19	13	12			
1:30	0	0	0				13:30	10	12	11			
1:45	1	1	0				13:45	16	16	13			
2:00	0	0	0				14:00	17	10	10			
2:15	0	0	0				14:15	2	9	18			
2:30	0	0	0				14:30	30	14	21			
2:45	1	2	1				14:45	19	6	17			
3:00	1	0	0				15:00	20	22	24			
3:15	0	0	0				15:15	14	33	29			
3:30	1	0	1				15:30	25	25	37			
3:45	0	0	0				15:45	21	35	39			
4:00	0	0	0				16:00	50	42	47			
4:15	0	0	0				16:15	63	41	45			
4:30	0	0	0				16:30	41	44	38			
4:45	2	2	1				16:45	29	45	41			
5:00	0	0	1				17:00	48	33	38			
5:15	0	0	2				17:15	31	41	35			
5:30	0	0	0				17:30	22	24	37			
5:45	3	3	3				17:45	26	23	35			
6:00	3	0	1				18:00	24	16	22			
6:15	12	13	16				18:15	20	16	12			
6:30	7	9	10				18:30	13	13	22			
6:45	7	5	4				18:45	7	12	13			
7:00	8	2	3				19:00	9	6	17			
7:15	3	9	6				19:15	14	7	8			
7:30	8	4	12				19:30	9	8	10			
7:45	7	8	5				19:45	2	7	5			
8:00	7	5	7				20:00	3	4	12			
8:15	3	6	9				20:15	6	6	5			
8:30	8	9	6				20:30	4	2	6			
8:45	7	12	13				20:45	10	5	4			
9:00	10	6	9				21:00	2	5	5			
9:15	9	9	10				21:15	7	3	4			
9:30	12	10	8				21:30	4	6	5			
9:45	14	13	8				21:45	2	3	1			
10:00	11	10	5				22:00	5	3	2			
10:15	8	6	11				22:15	6	3	11			
10:30	14	13	17				22:30	0	2	0			
10:45	5	0	16				22:45	1	3	2			
11:00	14	16	10				23:00	1	2	0			
11:15	17	9	10				23:15	2	1	2			
11:30	17	9	9				23:30	0	2	2			
11:45	11	10	9				23:45	1	2	0			



Site notes:

# Willis Point Rd between Wallace Dr and Municipal Boundary

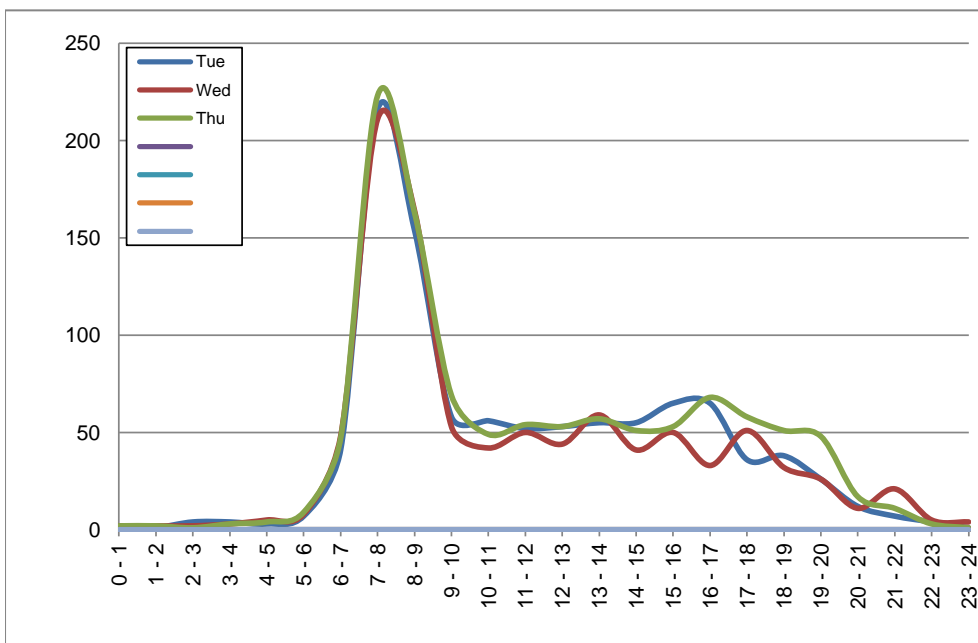
Eastbound  
April 2, 2019 to April 4, 2019

## Hourly Volumes

Time Period	Tue	Wed	Thu			
	Apr 2	Apr 3	Apr 4			
0 - 1	0	2	2			
1 - 2	1	2	2			
2 - 3	4	2	1			
3 - 4	4	3	3			
4 - 5	3	5	4			
5 - 6	7	8	9			
6 - 7	41	48	47			
7 - 8	216	211	223			
8 - 9	154	164	163			
9 - 10	58	53	69			
10 - 11	56	42	49			
11 - 12	52	50	54			
12 - 13	53	44	53			
13 - 14	55	59	57			
14 - 15	55	41	51			
15 - 16	65	50	53			
16 - 17	65	33	68			
17 - 18	36	51	58			
18 - 19	38	32	51			
19 - 20	26	26	48			
20 - 21	12	11	17			
21 - 22	7	21	11			
22 - 23	4	5	3			
23 - 24	1	4	1			
<b>Day Total</b>	<b>1013</b>	<b>967</b>	<b>1097</b>			

## 15-Minute Volumes

Time Start	Tue	Wed	Thu				Time Start	Tue	Wed	Thu			
	Apr 2	Apr 3	Apr 4					Apr 2	Apr 3	Apr 4			
0:00	0	0	1				12:00	12	14	15			
0:15	0	0	1				12:15	12	11	16			
0:30	0	2	0				12:30	16	8	8			
0:45	0	0	0				12:45	13	11	14			
1:00	0	1	0				13:00	11	12	11			
1:15	1	0	0				13:15	12	16	21			
1:30	0	1	1				13:30	16	13	14			
1:45	0	0	1				13:45	16	18	11			
2:00	3	0	0				14:00	9	12	12			
2:15	0	0	0				14:15	18	10	18			
2:30	0	1	0				14:30	14	9	9			
2:45	1	1	1				14:45	14	10	12			
3:00	1	0	0				15:00	11	8	11			
3:15	1	1	1				15:15	15	10	11			
3:30	0	2	1				15:30	23	21	21			
3:45	2	0	1				15:45	16	11	10			
4:00	0	0	0				16:00	15	11	22			
4:15	1	1	1				16:15	13	7	15			
4:30	1	2	2				16:30	19	9	15			
4:45	1	2	1				16:45	18	6	16			
5:00	0	2	0				17:00	10	18	20			
5:15	0	1	1				17:15	6	5	17			
5:30	3	1	3				17:30	11	19	11			
5:45	4	4	5				17:45	9	9	10			
6:00	2	4	1				18:00	11	10	11			
6:15	6	6	6				18:15	7	11	10			
6:30	12	18	16				18:30	12	5	16			
6:45	21	20	24				18:45	8	6	14			
7:00	29	38	36				19:00	7	8	11			
7:15	62	54	59				19:15	4	7	22			
7:30	58	57	66				19:30	7	5	8			
7:45	67	62	62				19:45	8	6	7			
8:00	48	50	59				20:00	4	5	5			
8:15	52	49	43				20:15	2	2	1			
8:30	36	37	34				20:30	2	2	6			
8:45	18	28	27				20:45	4	2	5			
9:00	19	15	22				21:00	2	7	3			
9:15	17	21	21				21:15	2	9	4			
9:30	15	10	14				21:30	1	4	1			
9:45	7	7	12				21:45	2	1	3			
10:00	15	14	13				22:00	2	1	0			
10:15	18	10	16				22:15	1	1	1			
10:30	13	9	10				22:30	1	1	0			
10:45	10	9	10				22:45	0	2	2			
11:00	10	10	10				23:00	0	1	0			
11:15	11	21	16				23:15	0	1	0			
11:30	15	10	14				23:30	0	2	0			
11:45	16	9	14				23:45	1	0	1			



Site notes:

# Vehicle Speed Summary

Saanich Engineering Department

Count Id: [M0042-01](#)

Filename: [Willis Point Rd between Wallace Dr and Municipal Boundary-Apr-2019.xlsm](#)

**Location:** Willis Point Rd between Wallace Dr and Municipal Boundary

Note: Wallace Dr and Municipal Boundary

Direction: **East-West**

Dates: **March 31, 2019 To April 05, 2019**

*Filtered data*

AVG. SPEED	<b>43</b> mph	<b>69</b> km/h
50 % SPEED	<b>43</b> mph	<b>70</b> km/h
85 % SPEED	<b>50</b> mph	<b>80</b> km/h
95 % SPEED	<b>54</b> mph	<b>86</b> km/h

Location Map



**Willis Point Rd between Wallace Dr and Municipal Boundary**

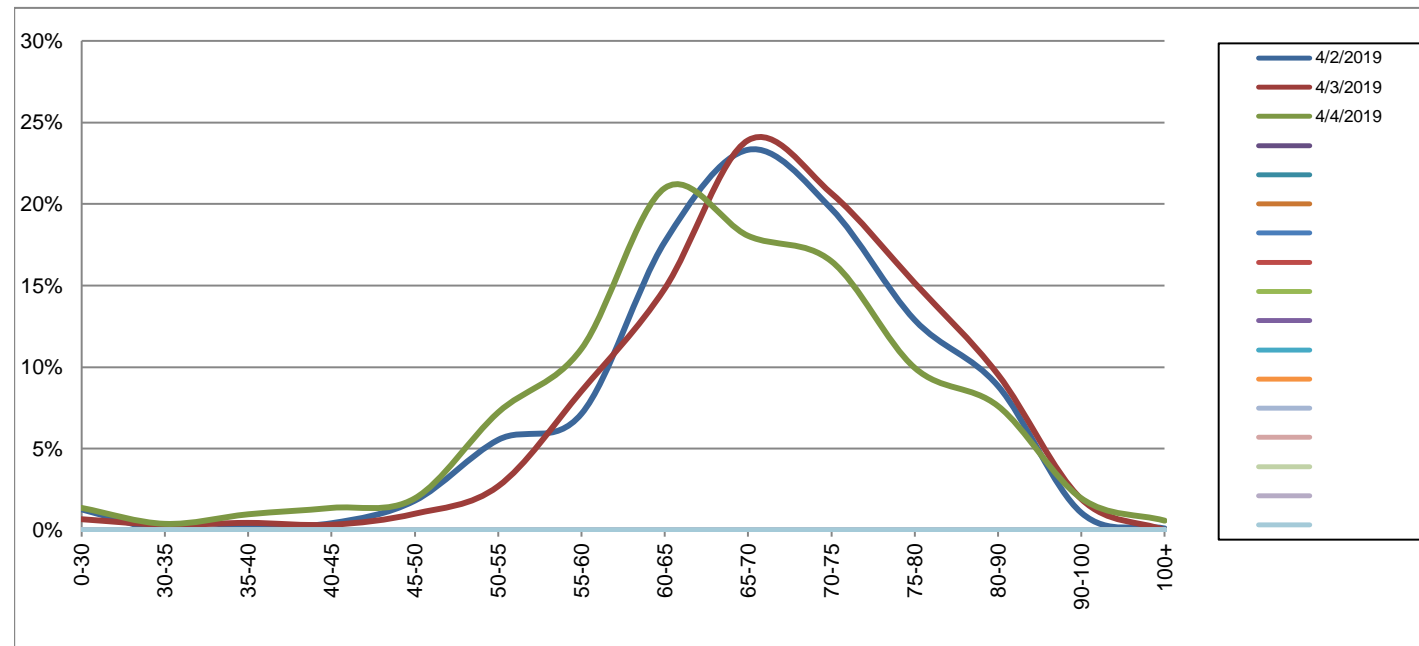
Westbound

April 2, 2019 to April 4, 2019

Daily Speed Bin Percentages														Daily Speed Bin Volumes														Total	Avg.	
Bin #	1	2	3	4	5	6	7	8	9	10	11	12	13	14	1	2	3	4	5	6	7	8	9	10	11	12	13	14	Volume	Speed
Bin Speeds	0-30	30-35	35-40	40-45	45-50	50-55	55-60	60-65	65-70	70-75	75-80	80-90	90-100	100+	0-30	30-35	35-40	40-45	45-50	50-55	55-60	60-65	65-70	70-75	75-80	80-90	90-100	100+		
4/2/2019	1.3%	0.0%	0.2%	0.4%	1.8%	5.5%	7.1%	17.7%	23.3%	19.7%	12.9%	8.8%	1.1%	0.1%	12	0	2	4	17	52	67	166	219	185	121	83	10	1	939	68
4/3/2019	0.7%	0.3%	0.4%	0.3%	1.0%	2.7%	8.5%	14.8%	23.9%	20.7%	15.2%	9.5%	1.9%	0.0%	6	3	4	3	9	24	76	132	213	184	135	85	17	0	891	69
4/4/2019	1.4%	0.4%	1.0%	1.4%	2.0%	7.2%	11.1%	21.0%	18.0%	16.5%	10.0%	7.6%	2.0%	0.6%	14	4	10	14	20	74	114	215	185	169	102	78	20	6	1025	66
<b>Total</b>	1.1%	0.2%	0.6%	0.7%	1.6%	5.3%	9.0%	18.0%	21.6%	18.8%	12.5%	8.6%	1.6%	0.2%	32	7	16	21	46	150	257	513	617	538	358	246	47	7	2855	68

**Speed Data Summary**

Bin #	1	2	3	4	5	6	7	8	9	10	11	12	13	14	Total
Bin Speeds	0-30	30-35	35-40	40-45	45-50	50-55	55-60	60-65	65-70	70-75	75-80	80-90	90-100	100+	
Survey Total	32	7	16	21	46	150	257	513	617	538	358	246	47	7	2855
% Total	1.1%	0.2%	0.6%	0.7%	1.6%	5.3%	9.0%	18.0%	21.6%	18.8%	12.5%	8.6%	1.6%	0.2%	100%
Accumulated %	1.1%	1.4%	1.9%	2.7%	4.3%	9.5%	18.5%	36.5%	58.1%	77.0%	89.5%	98.1%	99.8%	100%	
Inverse Accum. %	98.9%	98.6%	98.1%	97.3%	95.7%	90.5%	81.5%	63.5%	41.9%	23.0%	10.5%	1.9%	0.2%	0.0%	
Average Speed	68 KM/H														



Site notes:

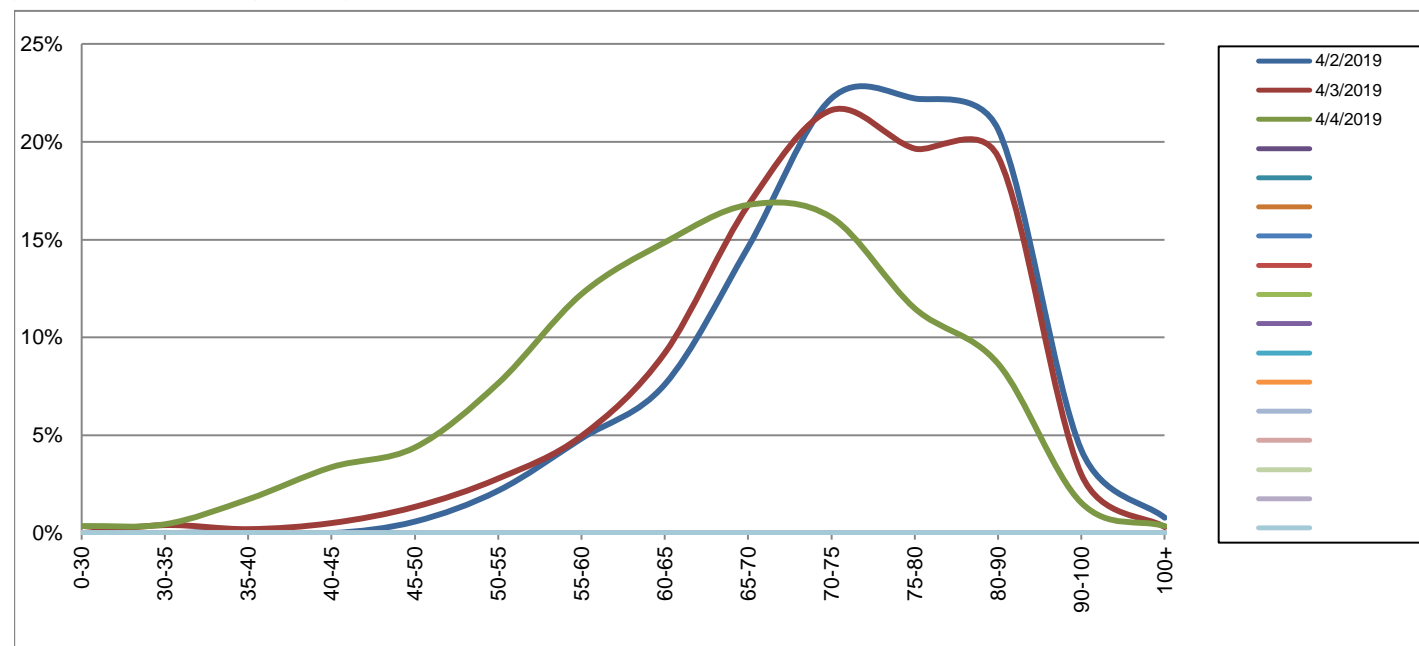
**Willis Point Rd between Wallace Dr and Municipal Boundary**

Eastbound  
April 2, 2019 to April 4, 2019

Daily Speed Bin Percentages														Daily Speed Bin Volumes														Total	Avg.	
Bin #	1	2	3	4	5	6	7	8	9	10	11	12	13	14	1	2	3	4	5	6	7	8	9	10	11	12	13	14	Volume	Speed
Bin Speeds	0-30	30-35	35-40	40-45	45-50	50-55	55-60	60-65	65-70	70-75	75-80	80-90	90-100	100+	0-30	30-35	35-40	40-45	45-50	50-55	55-60	60-65	65-70	70-75	75-80	80-90	90-100	100+		
4/2/2019	0.0%	0.0%	0.1%	0.0%	0.6%	2.2%	4.8%	7.6%	14.6%	22.2%	22.2%	20.6%	4.2%	0.8%	0	0	1	0	6	22	49	77	148	225	225	209	43	8	1013	75
4/3/2019	0.0%	0.4%	0.2%	0.5%	1.3%	2.8%	5.0%	9.2%	16.8%	21.6%	19.6%	19.2%	3.0%	0.3%	0	4	2	5	13	27	48	89	162	209	190	186	29	3	967	73
4/4/2019	0.4%	0.5%	1.7%	3.4%	4.4%	7.7%	12.2%	14.9%	16.8%	16.1%	11.5%	8.7%	1.5%	0.4%	4	5	19	37	48	84	134	163	184	177	126	95	17	4	1097	66
<b>Total</b>	0.1%	0.3%	0.7%	1.4%	2.2%	4.3%	7.5%	10.7%	16.1%	19.9%	17.6%	15.9%	2.9%	0.5%	4	9	22	42	67	133	231	329	494	611	541	490	89	15	3077	71

**Speed Data Summary**

Bin #	1	2	3	4	5	6	7	8	9	10	11	12	13	14	Total
Bin Speeds	0-30	30-35	35-40	40-45	45-50	50-55	55-60	60-65	65-70	70-75	75-80	80-90	90-100	100+	
Survey Total	4	9	22	42	67	133	231	329	494	611	541	490	89	15	3077
% Total	0.1%	0.3%	0.7%	1.4%	2.2%	4.3%	7.5%	10.7%	16.1%	19.9%	17.6%	15.9%	2.9%	0.5%	100%
Accumulated %	0.1%	0.4%	1.1%	2.5%	4.7%	9.0%	16.5%	27.2%	43.3%	63.1%	80.7%	96.6%	99.5%	100%	
Inverse Accum. %	99.9%	99.6%	98.9%	97.5%	95.3%	91.0%	83.5%	72.8%	56.7%	36.9%	19.3%	3.4%	0.5%	0.0%	
Average Speed	71 KM/H														



Site notes:

**Willis Point Rd between Wallace Dr and Municipal Boundary**

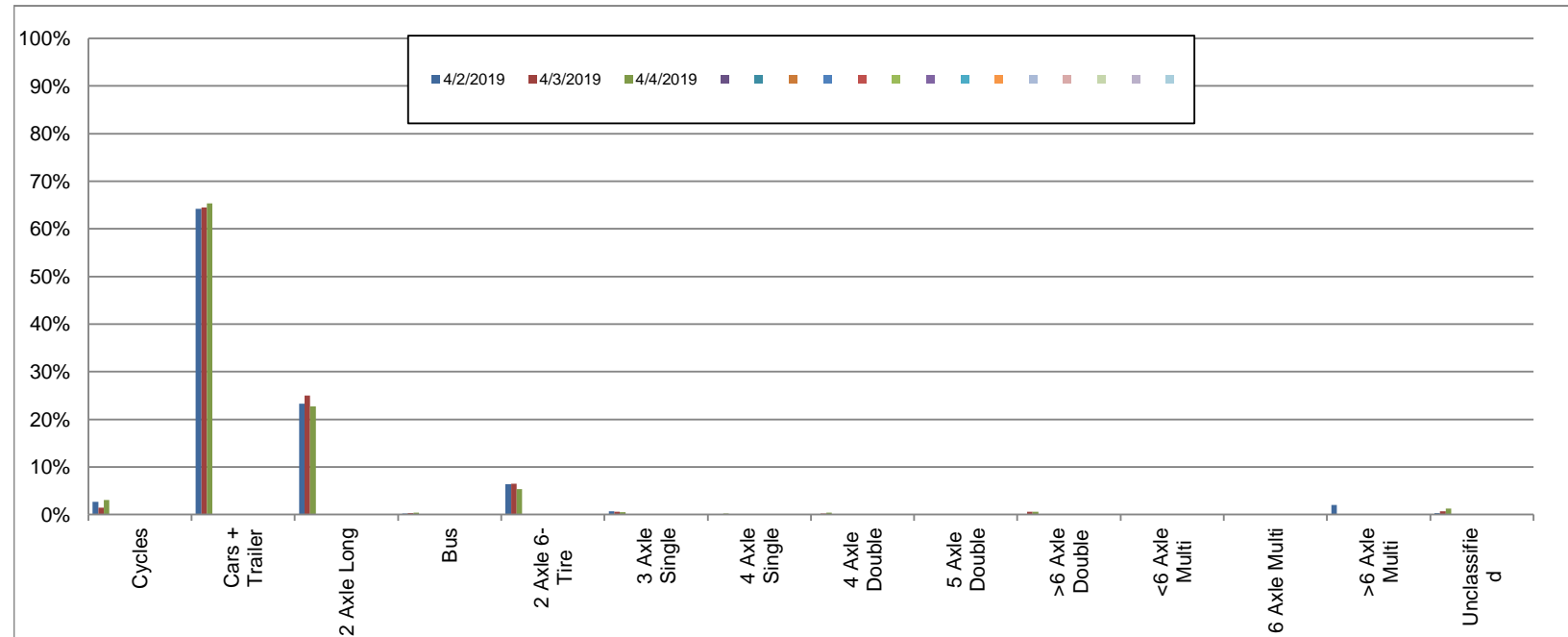
Westbound

April 2, 2019 to April 4, 2019

Daily Class Bin Percentages															Daily Class Bin Volumes														
Bin #	1	2	3	4	5	6	7	8	9	10	11	12	13	14	1	2	3	4	5	6	7	8	9	10	11	12	13	14	Total Volume
Bin Class	Cycles	Cars + Trailer	2 Axle Long	Bus	2 Axle 6-Tire	3 Axle Single	4 Axle Single	4 Axle Double	5 Axle Double	>6 Axle Double	<6 Axle Multi	6 Axle Multi	>6 Axle Multi	Unclassified	Cycles	Cars + Trailer	2 Axle Long	Bus	2 Axle 6-Tire	3 Axle Single	4 Axle Single	4 Axle Double	5 Axle Double	>6 Axle Double	<6 Axle Multi	6 Axle Multi	>6 Axle Multi	Unclassified	
4/2/2019	2.7%	64.2%	23.3%	0.2%	6.4%	0.6%	0.0%	0.1%	0.0%	0.1%	0.0%	0.0%	2.0%	0.3%	25	603	219	2	60	6	0	1	0	1	0	0	19	3	939
4/3/2019	1.5%	64.5%	25.0%	0.3%	6.5%	0.6%	0.0%	0.2%	0.1%	0.6%	0.0%	0.0%	0.0%	0.7%	13	575	223	3	58	5	0	2	1	5	0	0	0	6	891
4/4/2019	3.0%	65.4%	22.7%	0.4%	5.4%	0.5%	0.2%	0.4%	0.1%	0.6%	0.0%	0.0%	0.1%	1.3%	31	670	233	4	55	5	2	4	1	6	0	0	1	13	1025
<b>Total</b>	<b>2.4%</b>	<b>64.7%</b>	<b>23.6%</b>	<b>0.3%</b>	<b>6.1%</b>	<b>0.6%</b>	<b>0.1%</b>	<b>0.2%</b>	<b>0.1%</b>	<b>0.4%</b>	<b>0.0%</b>	<b>0.0%</b>	<b>0.7%</b>	<b>0.8%</b>	<b>69</b>	<b>1848</b>	<b>675</b>	<b>9</b>	<b>173</b>	<b>16</b>	<b>2</b>	<b>7</b>	<b>2</b>	<b>12</b>	<b>0</b>	<b>0</b>	<b>20</b>	<b>22</b>	<b>2855</b>

**Class Data Summary**

Bin #	1	2	3	4	5	6	7	8	9	10	11	12	13	14	Total Volume
Bin Class	Cycles	Cars + Trailer	2 Axle Long	Bus	2 Axle 6-Tire	3 Axle Single	4 Axle Single	4 Axle Double	5 Axle Double	>6 Axle Double	<6 Axle Multi	6 Axle Multi	>6 Axle Multi	Unclassified	Total Volume
<b>Survey Total</b>	69	1848	675	9	173	16	2	7	2	12	0	0	20	22	2855
<b>% Total</b>	2.4%	64.7%	23.6%	0.3%	6.1%	0.6%	0.1%	0.2%	0.1%	0.4%	0.0%	0.0%	0.7%	0.8%	100%
<b>Accumulated %</b>	2.4%	67.1%	90.8%	91.1%	97.2%	97.7%	97.8%	98.0%	98.1%	98.5%	98.5%	98.5%	99.2%	100.0%	
<b>Inv. Accum. %</b>	97.6%	32.9%	9.2%	8.9%	2.8%	2.3%	2.2%	2.0%	1.9%	1.5%	1.5%	1.5%	0.8%	0.0%	



**Classification Descriptions**

Bin #	Bin Description
1	Motorcycles
2	Passenger cars, including those with recreational trailers
3	2-axle pick-ups, vans, and RVs, including those with recreational trailers
4	Buses
5	2-axle, 6-tire single units
6	3-axle single units
7	4-axle single units
8	3-axle or 4-axle double unit
9	5-axle double unit
10	6-, 7-, or 8-axle double unit
11	5-axle multiple unit
12	6-axle multiple unit
13	7-or-more-axle multiple unit
14	Vehicles that could not be classified

Site notes:



**Willis Point Rd between Wallace Dr and Municipal Boundary**

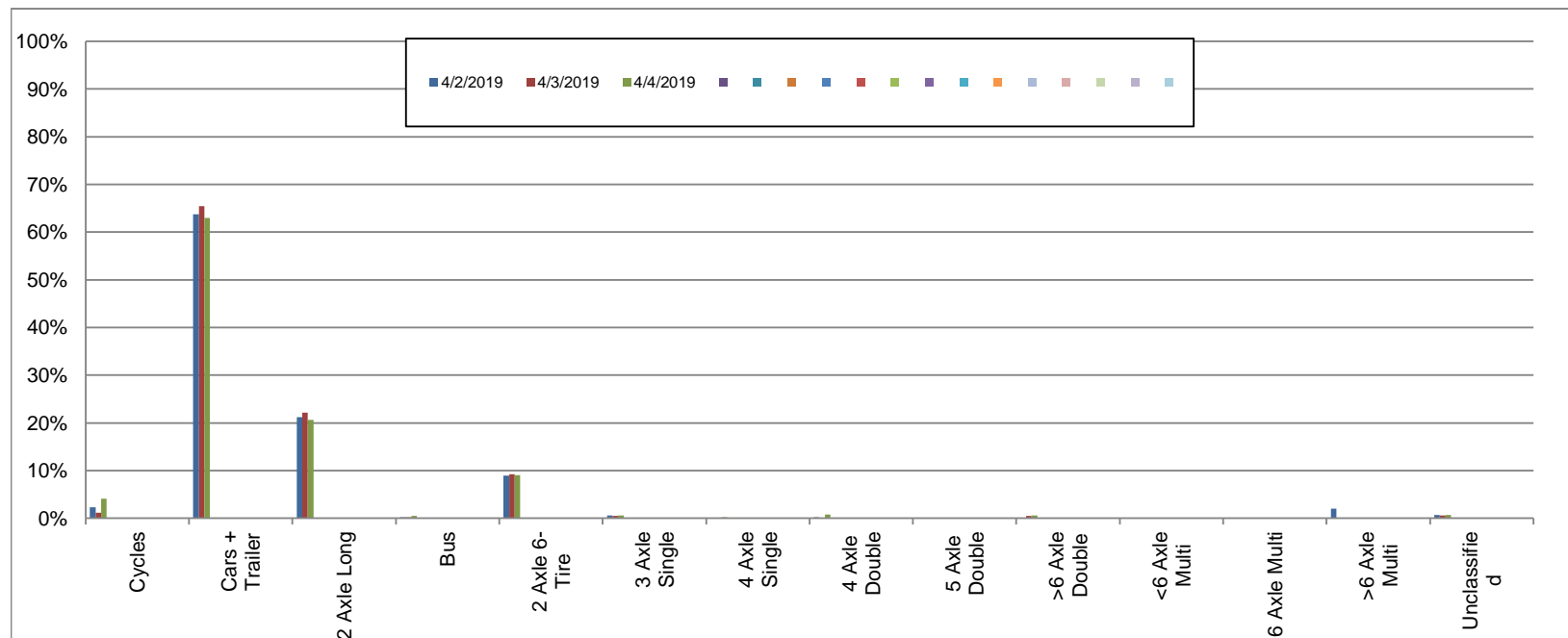
Eastbound

April 2, 2019 to April 4, 2019

Daily Class Bin Percentages															Daily Class Bin Volumes														
Bin #	1	2	3	4	5	6	7	8	9	10	11	12	13	14	1	2	3	4	5	6	7	8	9	10	11	12	13	14	Total Volume
Bin Class	Cycles	Cars + Trailer	2 Axle Long	Bus	2 Axle 6-Tire	3 Axle Single	4 Axle Single	4 Axle Double	5 Axle Double	>6 Axle Double	<6 Axle Multi	6 Axle Multi	>6 Axle Multi	Unclassified	Cycles	Cars + Trailer	2 Axle Long	Bus	2 Axle 6-Tire	3 Axle Single	4 Axle Single	4 Axle Double	5 Axle Double	>6 Axle Double	<6 Axle Multi	6 Axle Multi	>6 Axle Multi	Unclassified	Total Volume
4/2/2019	2.3%	63.8%	21.2%	0.2%	9.0%	0.6%	0.0%	0.2%	0.0%	0.1%	0.0%	0.0%	2.0%	0.7%	23	646	215	2	91	6	0	2	0	1	0	0	20	7	1013
4/3/2019	1.1%	65.5%	22.1%	0.2%	9.2%	0.5%	0.0%	0.1%	0.1%	0.5%	0.0%	0.0%	0.0%	0.6%	11	633	214	2	89	5	0	1	1	5	0	0	0	6	967
4/4/2019	4.1%	63.0%	20.6%	0.5%	9.0%	0.5%	0.2%	0.7%	0.1%	0.5%	0.0%	0.0%	0.1%	0.6%	45	691	226	5	99	6	2	8	1	6	0	0	1	7	1097
<b>Total</b>	<b>2.6%</b>	<b>64.0%</b>	<b>21.3%</b>	<b>0.3%</b>	<b>9.1%</b>	<b>0.6%</b>	<b>0.1%</b>	<b>0.4%</b>	<b>0.1%</b>	<b>0.4%</b>	<b>0.0%</b>	<b>0.0%</b>	<b>0.7%</b>	<b>0.6%</b>	<b>79</b>	<b>1970</b>	<b>655</b>	<b>9</b>	<b>279</b>	<b>17</b>	<b>2</b>	<b>11</b>	<b>2</b>	<b>12</b>	<b>0</b>	<b>0</b>	<b>21</b>	<b>20</b>	<b>3077</b>

**Class Data Summary**

Bin #	1	2	3	4	5	6	7	8	9	10	11	12	13	14	Total Volume
Bin Class	Cycles	Cars + Trailer	2 Axle Long	Bus	2 Axle 6-Tire	3 Axle Single	4 Axle Single	4 Axle Double	5 Axle Double	>6 Axle Double	<6 Axle Multi	6 Axle Multi	>6 Axle Multi	Unclassified	Total Volume
<b>Survey Total</b>	79	1970	655	9	279	17	2	11	2	12	0	0	21	20	3077
<b>% Total</b>	2.6%	64.0%	21.3%	0.3%	9.1%	0.6%	0.1%	0.4%	0.1%	0.4%	0.0%	0.0%	0.7%	0.6%	100%
<b>Accumulated %</b>	2.6%	66.6%	87.9%	88.2%	97.2%	97.8%	97.9%	98.2%	98.3%	98.7%	98.7%	98.7%	99.4%	100.0%	
<b>Inv. Accum. %</b>	97.4%	33.4%	12.1%	11.8%	2.8%	2.2%	2.1%	1.8%	1.7%	1.3%	1.3%	1.3%	0.6%	0.0%	



**Classification Descriptions**

Bin #	Bin Description
1	Motorcycles
2	Passenger cars, including those with recreational trailers
3	2-axle pick-ups, vans, and RVs, including those with recreational trailers
4	Buses
5	2-axle, 6-tire single units
6	3-axle single units
7	4-axle single units
8	3-axle or 4-axle double unit
9	5-axle double unit
10	6-, 7-, or 8-axle double unit
11	5-axle multiple unit
12	6-axle multiple unit
13	7-or-more-axle multiple unit
14	Vehicles that could not be classified

Site notes: